



# Modular Schools

---

# Conceptual Floor Plans

## CONTACT INFORMATION:

Email: [information@modularsolutionsltd.com](mailto:information@modularsolutionsltd.com)

Website: [www.modularsolutionsltd.com](http://www.modularsolutionsltd.com)

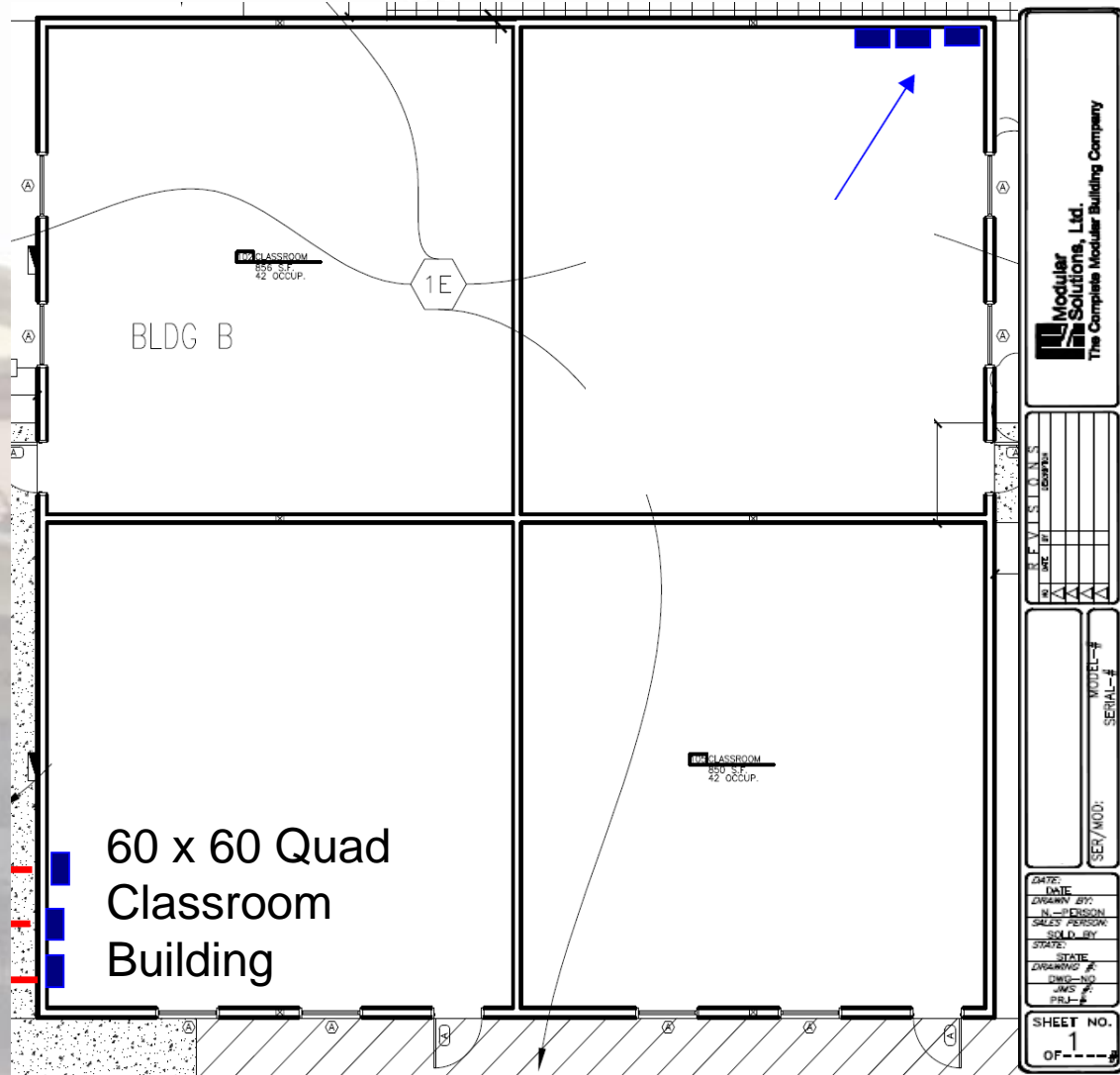
Toll Free: (800) 441-8577 x 1



Modular Solutions, Ltd  
Modular Church  
Model # MSED102

Modular Schools can be stand alone campus projects or they can be an addition to an existing campus. The typical classroom size allows about 20 sq. ft. per occupant for educational space.

Ancillary spaces such as multi-purpose or office administration are built to the corresponding code. Restrooms are optional with this typical design, if you have sufficient restrooms on site.

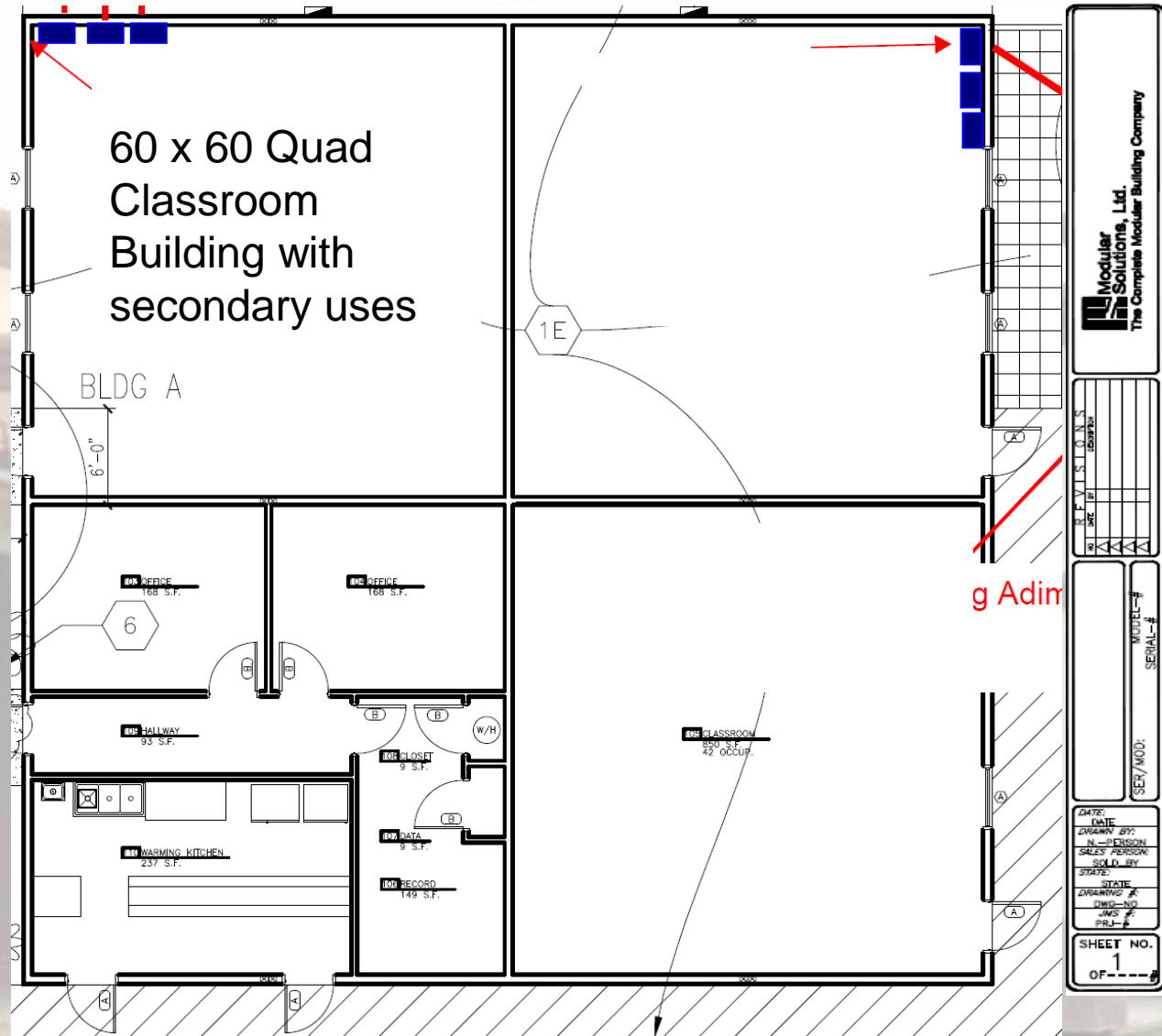


Modular Solutions, Ltd  
Modular Church  
Model # MSED103

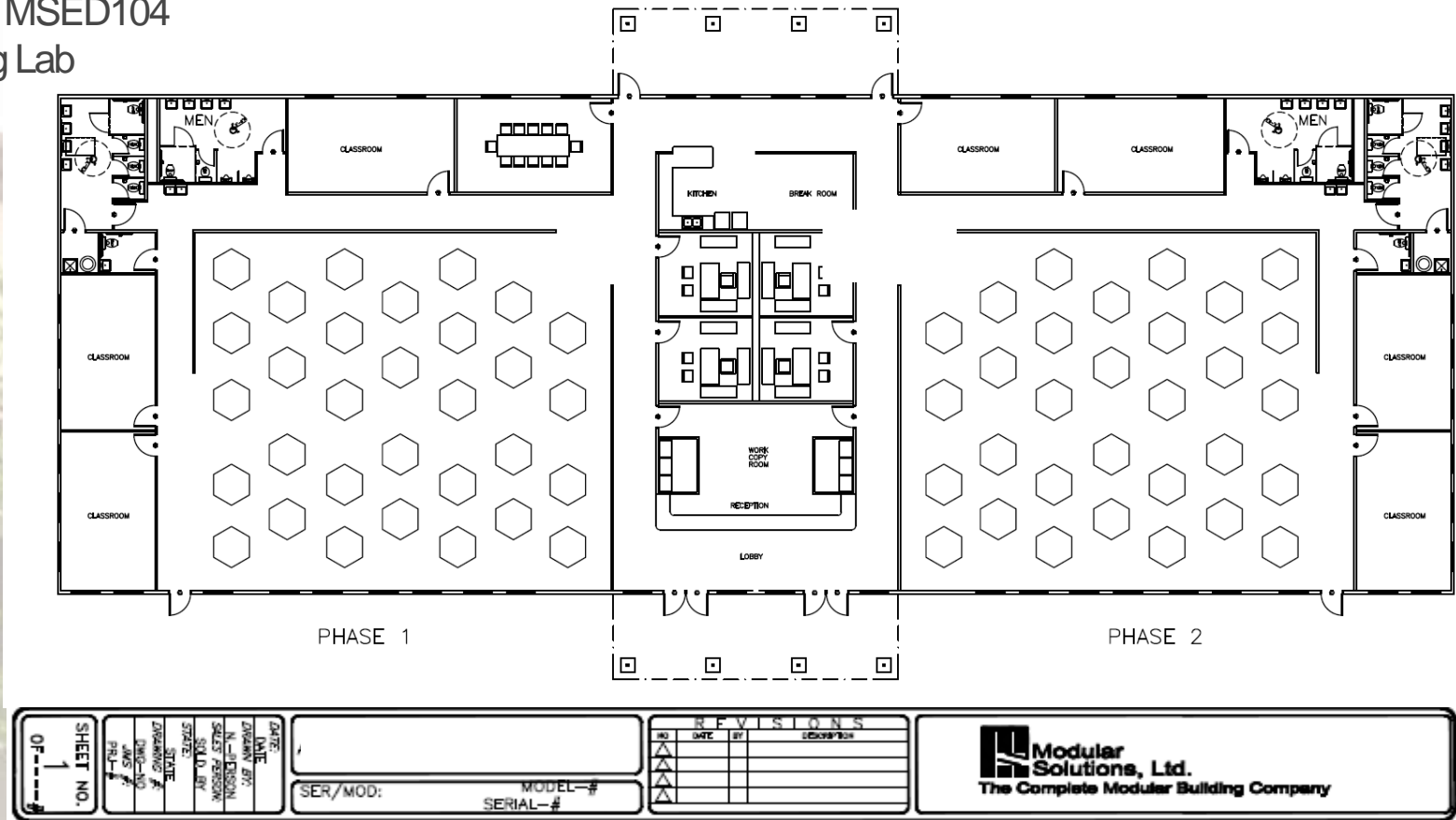
Modular Schools can be stand alone campus projects or they can be an addition to an existing campus. The typical classroom size allows about 20 sq. ft. per occupant for educational space.

Ancillary spaces such as multi-purpose or office administration are built to the corresponding code.

Restrooms are optional with this typical design, if you have sufficient restrooms on site.



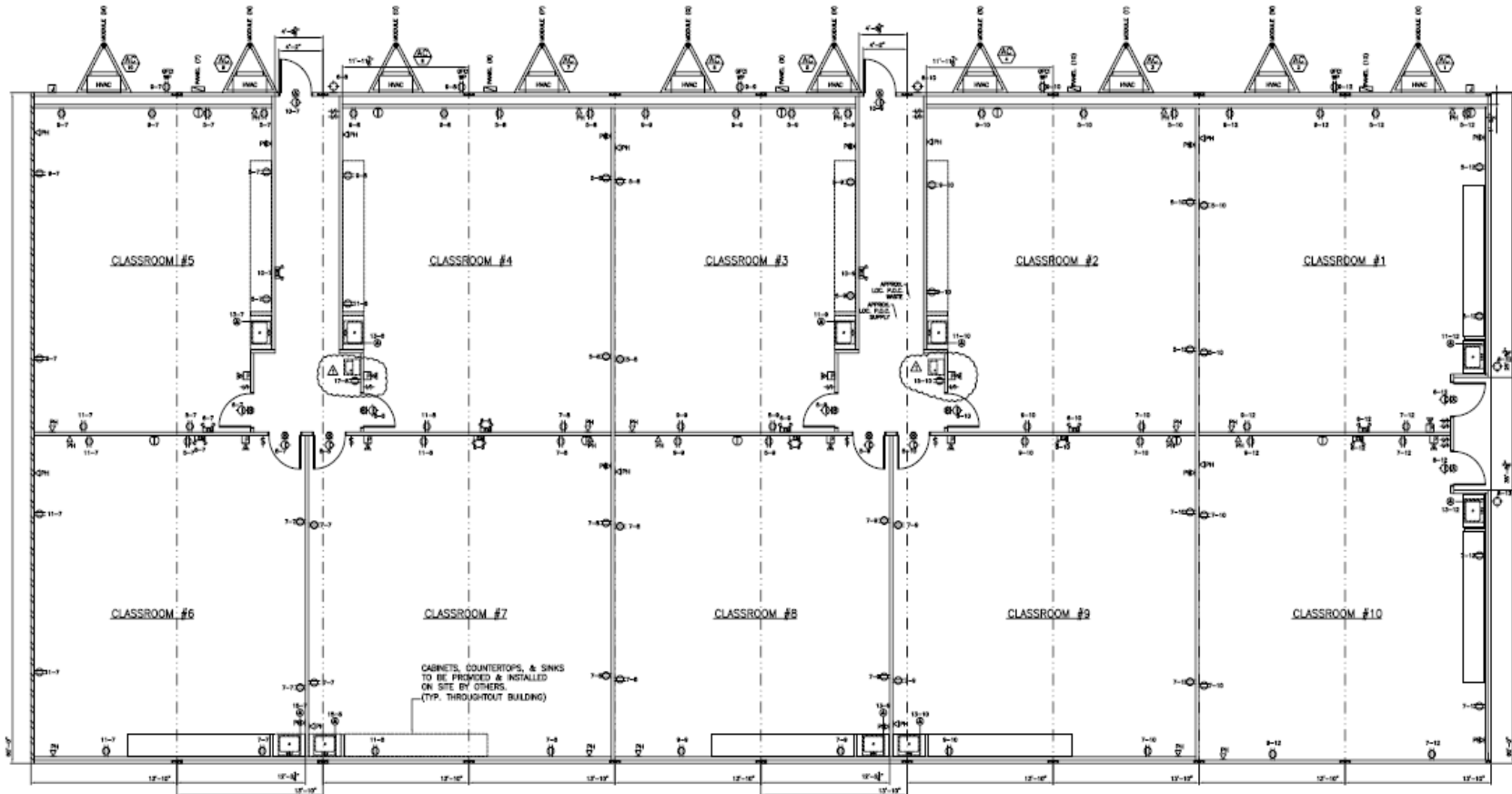
Modular Solutions, Ltd  
Modular Church  
Model # MSED104  
Learning Lab




Sometimes a more open learning environment is better for education. Learning labs are incorporated with modern technology & break out rooms for smaller hands on education.

Modular Solutions, Ltd  
 Modular Church  
 Model # MSED105  
 (10) CLASSROOM ADDITION

This campus only needed classrooms, they had restrooms and administration space. The site was compact so they needed the classrooms to be under on roof, and also utility connections were less expensive to be under one roof



SHEET NO. 1 OF 1	DATE: _____ DRAWN BY: _____ CHECKED BY: _____ SCALE: _____ STATE: _____ DRAWING # _____ DIM. NO. _____ JAN. 2011 P.L. # _____	ASSEMBLY / CHAPEL  SER./MOD: _____ MODEL-# _____ SERIAL-# _____	REVISIONS NO. DATE BY	 <b>Modular Solutions, Ltd.</b> The Complete Modular Building Company
	(Empty space for drawing details)			(Empty space for revision entries)

Modular Solutions, Ltd  
 Modular Church  
 Model # MSED106  
 School Campus

An entire school under one roof is common in extreme cold and heat climates. This saves on energy and site coverage. This campus was built in two phases for over 30,000 sq ft total building space.



SHEET NO. 1 OF 4	DATE	
	BY	
	DESIGNED BY	
	IN CHARGE	
	SCALE	

SER/MOD: \_\_\_\_\_ MODEL-# \_\_\_\_\_  
 SERIAL-# \_\_\_\_\_

REVISIONS		
NO	DATE	BY



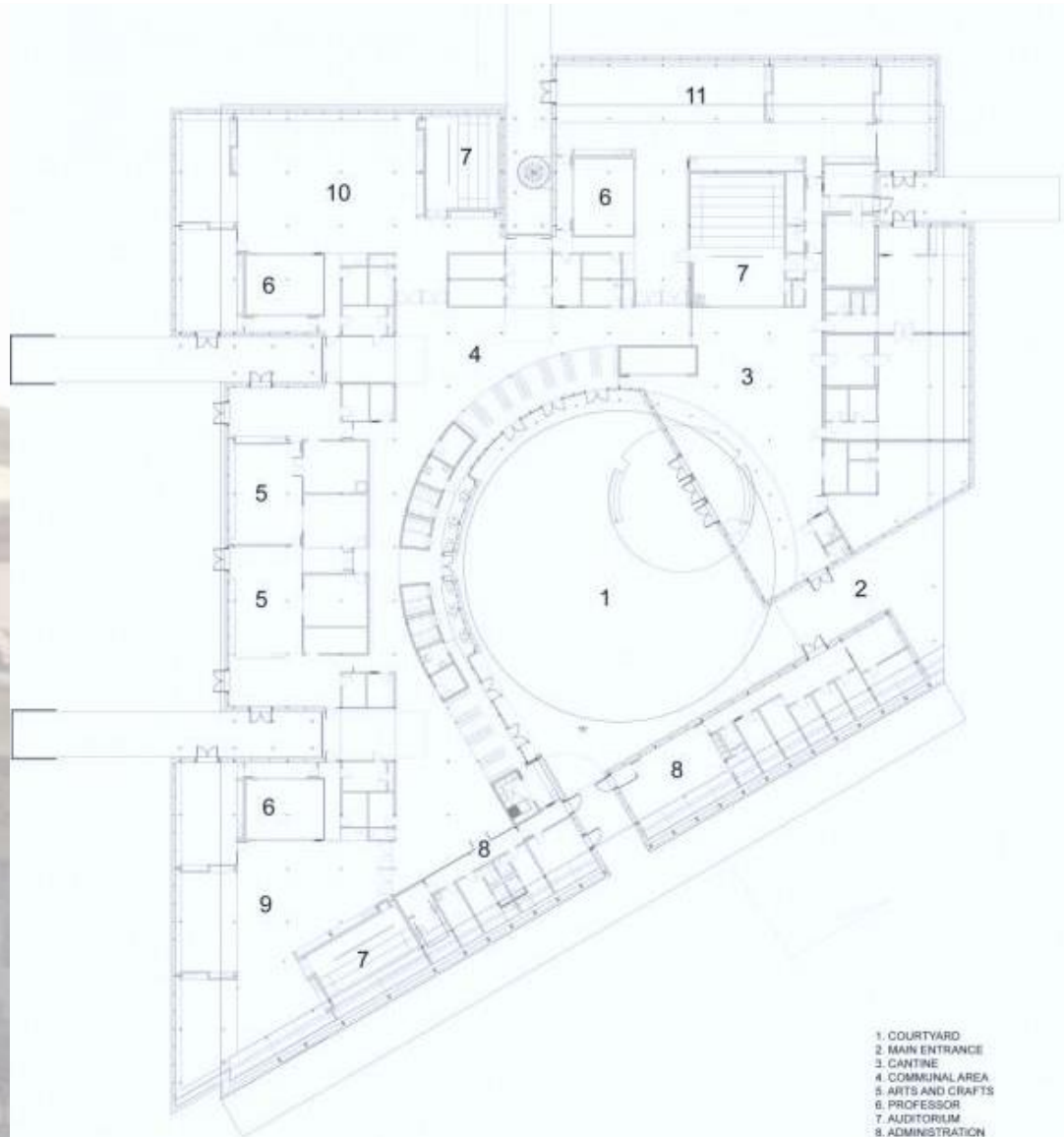
**Modular Solutions, Ltd.**  
 The Complete Modular Building Company

Modular Solutions, Ltd  
 Modular Church  
 Model # MSED107  
 School Campus


High school education generally needs more space and parking on a campus.

Architectural design will allow for specialized teaching in the STEM and arts categories to accelerate the education learning process and allow freedom and free thought.

A typical high school building (all in one building or in multiple buildings) will be 100,000 square feet or more.



- 1. COURTYARD
- 2. MAIN ENTRANCE
- 3. CANTINE
- 4. COMMUNAL AREA
- 5. ARTS AND CRAFTS
- 6. PROFESSOR
- 7. AUDITORIUM
- 8. ADMINISTRATION
- 9. 8TH GRADE
- 10. 9TH GRADE
- 11. 10TH GRADE

OF 1 #	SHEET NO. 1	DATE 10/10/10	ASSEMBLY / CHAPEL	MODEL-# SERIAL-#	REVISIONS NO. DATE BY COMMENTS	 The Complete Modular Building Company
--------------	----------------	------------------	-------------------	---------------------	-----------------------------------	--